

NUMBERS

Parts — include seam allowance

Background:

1-2½"x3½"

4-1½"x1½"

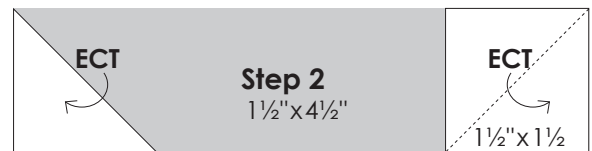
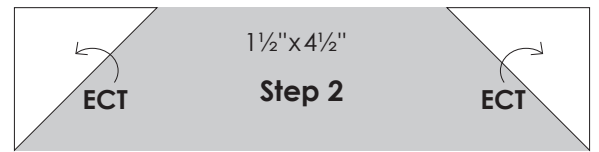
Print:

2-1½"x4½"

2-1½"x3½"

Press toward Print except some ECTs then follow direction of arrows.

*ECT –Easy Corner Triangles



Parts — include seam allowance

Background:

1-2½"x4½"

1-1½"x2½"

1-1½"x5½"

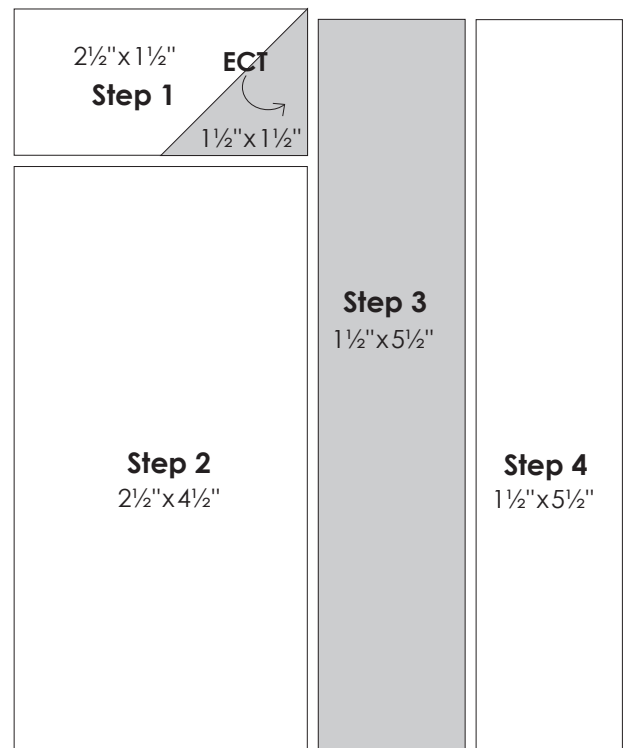
Print:

1-1½"x1½"

1-1½"x5½"

Press toward Print except some ECTs then follow direction of arrows.

*ECT –Easy Corner Triangles



NUMBERS

Parts — include seam allowance

Background:

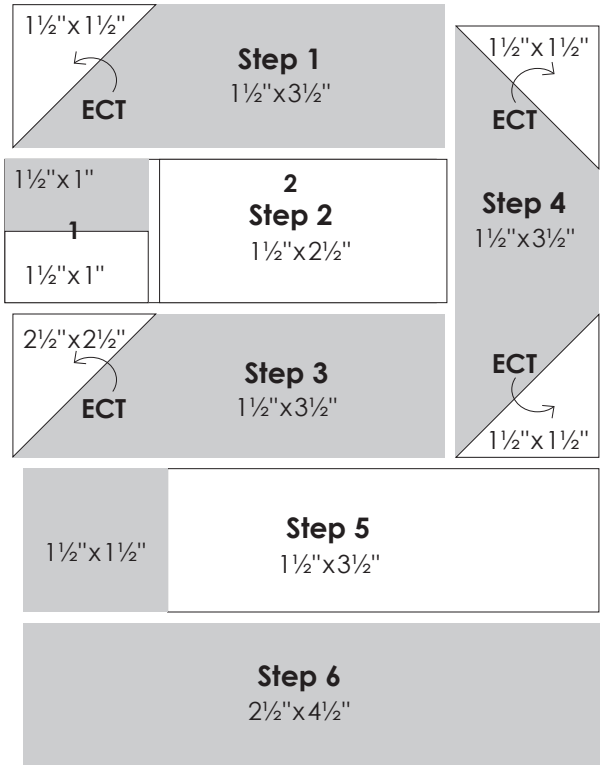
- 1-1½"x1"
- 4-1½"x1½"
- 1-1½"x2½"
- 1-1½"x3½"

Print:

- 1-1½"x1"
- 1-1½"x1½"
- 3-1½"x3½"
- 1-1½"x4½"

Press toward Print except some ECTs then follow direction of arrows.

*ECT – Easy Corner Triangles



Parts — include seam allowance

Background:

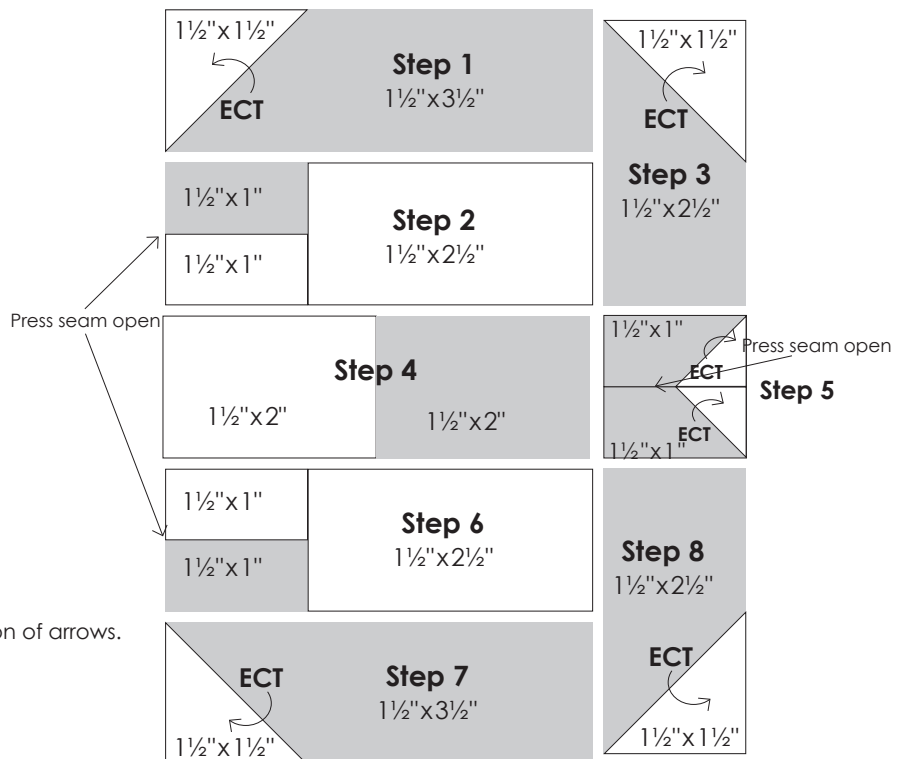
- 2-1"x1"
- 2-1½"x1"
- 4-1½"x1½"
- 1-1½"x2"
- 2-1½"x2½"

Print:

- 4-1½"x1"
- 1-1½"x2"
- 2-1½"x2½"
- 2-1½"x3½"

Press toward Print except some ECTs then follow direction of arrows.

*ECT – Easy Corner Triangles



NUMBERS

Parts — include seam allowance

Background:

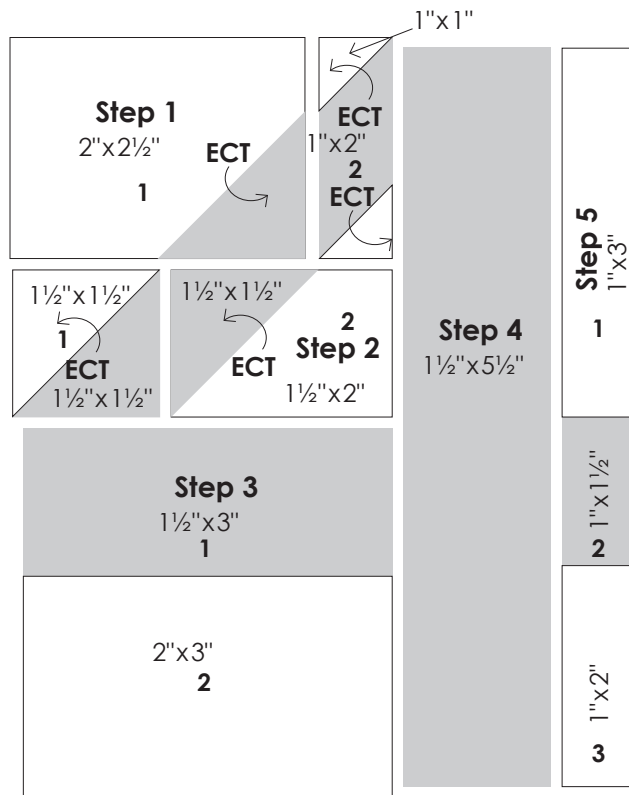
- 2-1"x1" 1-1½"x2"
- 1-1"x2" 1-2"x2½"
- 1-1"x3" 1-2"x3"
- 1-1½"x1½"

Print:

- 1-1"x1½" 1-1½"x3"
- 1-1"x2" 1-1½"x5½"
- 3-1½"x1½"

Press toward Print except some ECTs then follow direction of arrows.

*ECT - Easy Corner Triangles



Parts — include seam allowance

Background:

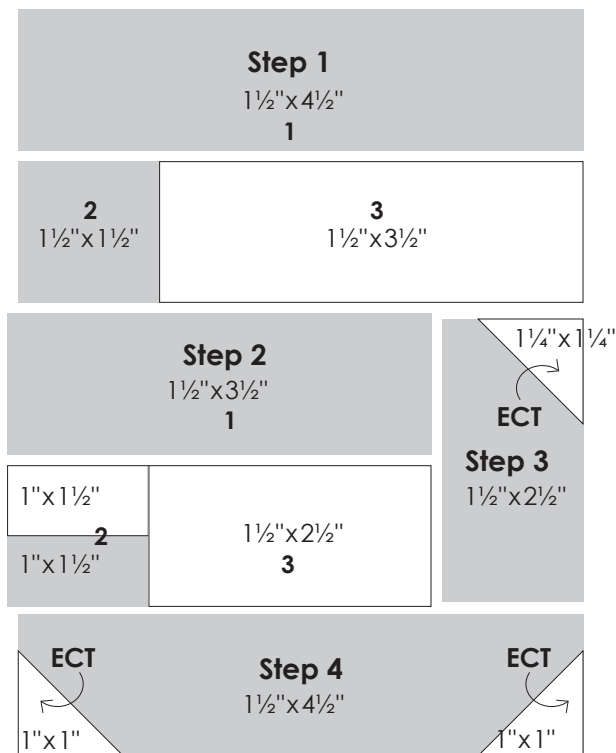
- 3-1¼"x1¼" 1-1½"x2½"
- 1-1"x1½" 1-1½"x3½"

Print:

- 1-1"x1½" 1-1½"x3½"
- 1-1½"x1½" 2-1½"x4½"
- 1-1½"x2½"

Press toward Print except some ECTs then follow direction of arrows.

*ECT - Easy Corner Triangles



NUMBERS

Parts — include seam allowance

Background:

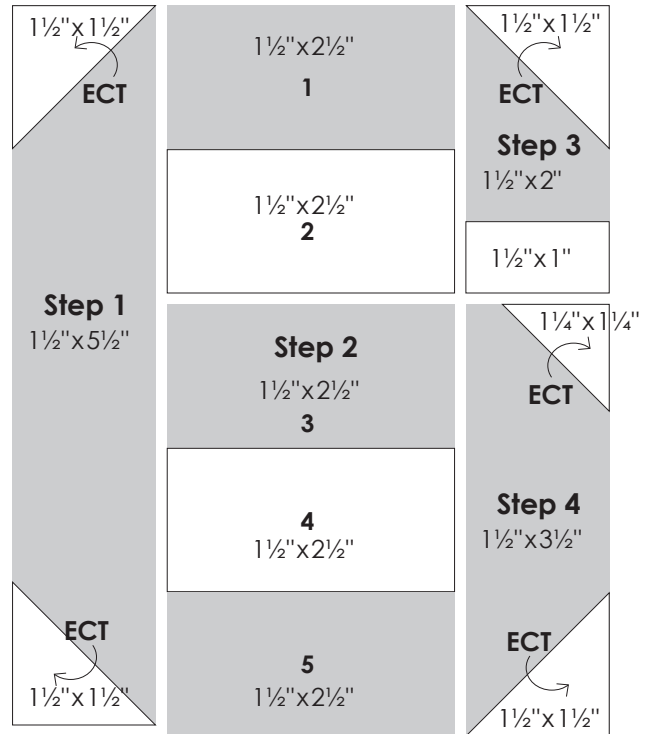
- 1-1½"x1" 4-1½"x1½"
- 1-1¼"x1¼" 2-1½"x2½"

Print:

- 1-1½"x2" 1-1½"x3½"
- 3-1½"x2½" 1-1½"x5½"

Press toward Print except some ECTs then follow direction of arrows.

*ECT – Easy Corner Triangles



Parts — include seam allowance

Background:

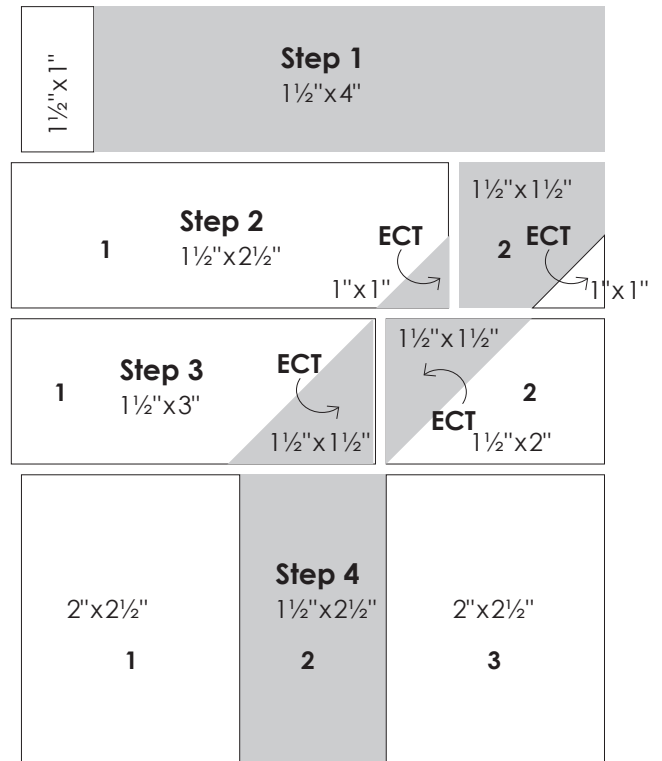
- 1-1"x1" 1-1½"x3"
- 1-1½"x1" 1-1½"x3½"
- 1-1½"x2" 2-2"x2½"

Print:

- 1-1"x1" 1-1½"x2½"
- 3-1½"x1½" 1-1½"x4"

Press toward Print except some ECTs then follow direction of arrows.

*ECT – Easy Corner Triangles



NUMBERS

Parts — include seam allowance

Background:

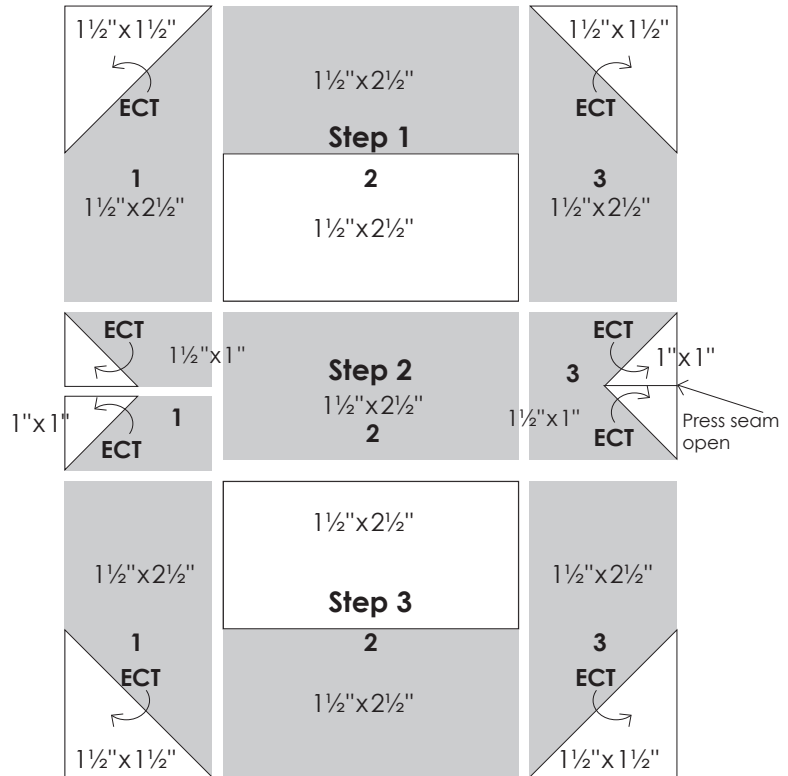
- 4-1"x1"
- 4-1½"x1½"
- 2-1½"x2½"

Print:

- 4-1½"x1"
- 7-1½"x2½"

Press toward Print except some ECTs then follow direction of arrows.

*ECT – Easy Corner Triangles



Parts — include seam allowance

Background:

- 1-1"x1"
- 4-1½"x1½"
- 1-1½"x1"
- 2-1½"x2½"

Print:

- 1-1½"x2"
- 1-1½"x3½"
- 3-1½"x2½"
- 1-1½"x5½"

Press toward Print except some ECTs then follow direction of arrows.

*ECT – Easy Corner Triangles

