

SEW

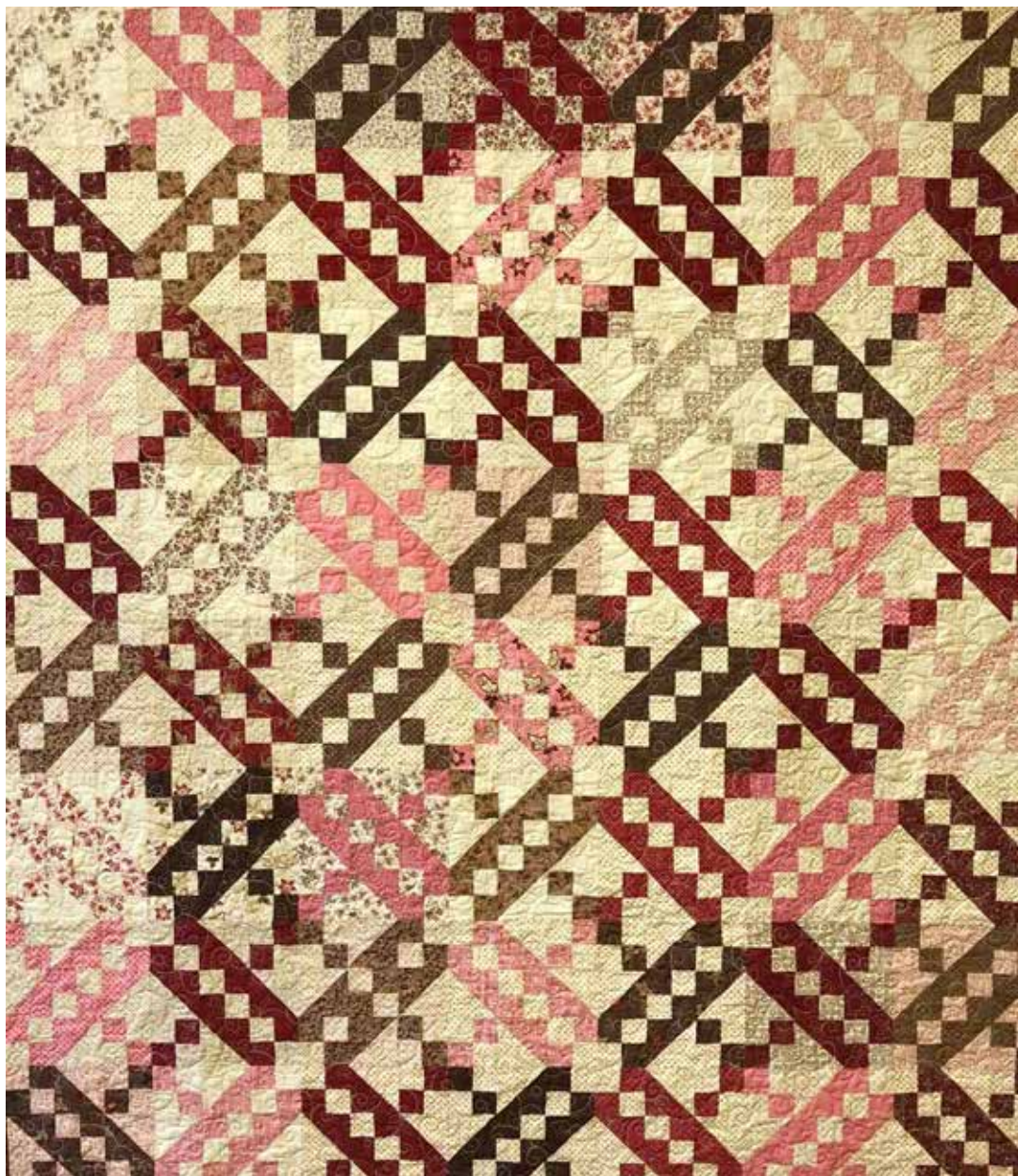
NAME: Harriet's Handwork

FROM THE STUDIO OF: Miss Rosie

SIZE: 63" x 72"

PAGE: 1 of 2

RECIPE
moda



Harriet's Handwork by Betsy Chuchian.

This quilt was made with 2 pads - 56 sheets - of Cake Mix Recipe 10.

Fabric Requirements:

2 Harriet's Handwork Layer Cakes

2 ¼ yards of additional background - use one print or several, enough to cut 28 squares - 10" x 10"

¾ yard for binding

4 ¼ yards for backing

8

7

6

5

4

3

2

1

Cutting:

From the additional background, cut 7 strips - 10" x 42" wof. From the strips, cut a total of 28 squares - 10" x 10".

Assembly: After stitching the Cake Mix Recipe grid - all seams are a scant ¼".

Pair one light - or additional background - square and one medium/dark square – 10" x 10" – with right sides together. Make 56 pairs.

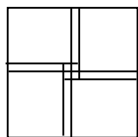
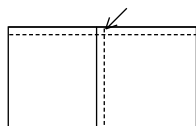
Pin the paper on top of the lighter fabric with enough pins to keep the paper in place while it is being stitched and turned. Stitch on the dotted lines – stitch 56 recipe cards.

Cut the grids apart on the solid lines. Press the seams to the darker fabric with the paper still on.

Remove the paper and trim the points from the HTSs. (The HTSs will measure 3 ½" x 3 ½" - 3" x 3" finished size.)

Join the pieced strips to make five four-patch units. (The four-patches will measure 3 ½" x 3 ½" - 3" x 3" finished size.)

Tip: To help with joining the blocks and to make the seams in the center of the four patches lay very flat - remove the stitches in the seam allowance where the seams intersect - shown with the arrow. Remove the stitches on both sides - for both seams. This allows the center seam to be flipped - popped or spun - so that the direction of the seams on the back of the four-patch are going in a clockwise or counter-clockwise direction. This creates a little four-patch in the center on the wrong side of the four patch.



Each recipe card yields 4 – 3" x 3" HTSs and 5 – 3" x 3" four patches for a 9" x 9" finished block.

Harriet's Handwork was made using Block 1 on the front cover. Piece 56 blocks.

Lay out the blocks in 8 rows of 7 blocks as shown in the picture.

Join the blocks to make the rows. Press the seams in one direction – pressing the seams of alternating rows in the opposite direction.

Join the rows to complete the quilt top. Press the seams in one direction.

Quilt and bind as desired.



SEW

NAME: Lollies Sweetie Railroad

PAGE: 3 of 3

moda
RECIPE

8 7 6 5 4 3 2 1