



V and Co.

color me happy

“When I think of my favorite colors, the color scheme of this collection falls in that category. The simple designs and the colorful palette make me über happy and make me smile every time I work with this line. I hope it colors your fabric stash and projects happy, as well!”

Vanessa



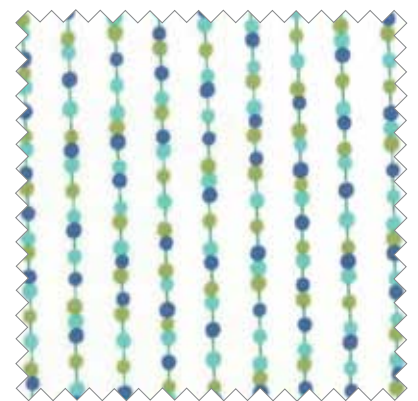
No 10826 11
White Pink



No 10826 21
White Teal



No 10820 11*
White



No 10825 11*
White

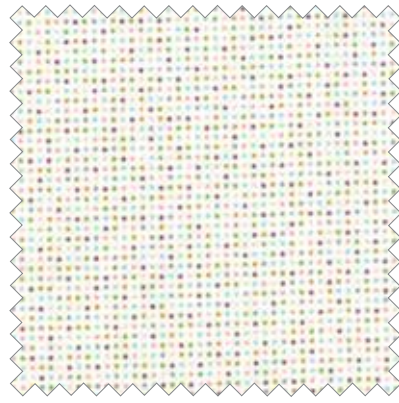
1 • 4 • 1



1 Stripe Fabric Makes 1 Quilt



№ 10827 11*
Multi



№ 10827 21*
Multi Lime



№ 10822 17*
Gray



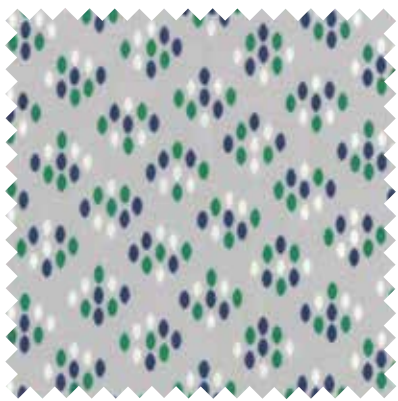
№ 10821 17*
Gray



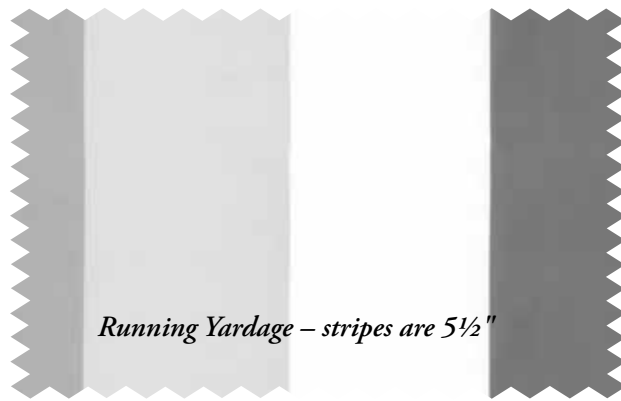
№ 10825 17*
Gray



№ 10826 17*
Gray

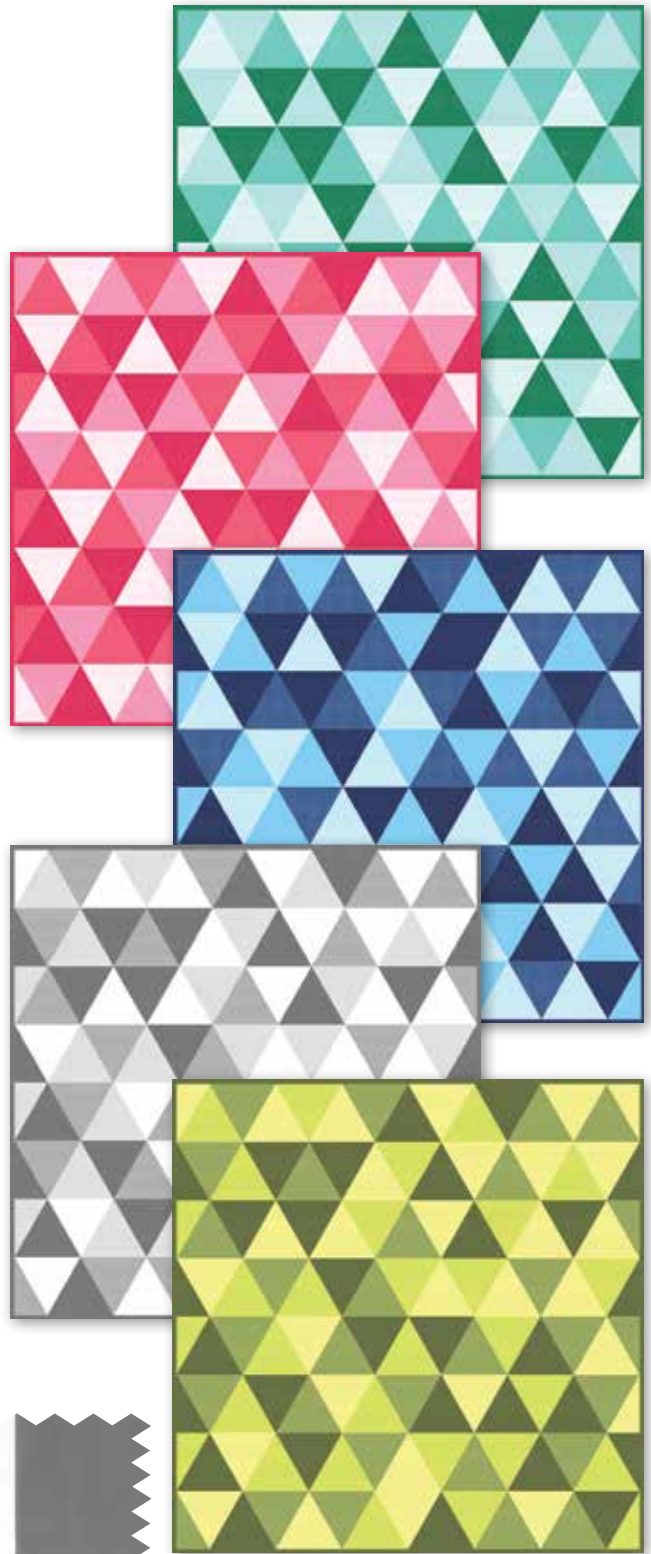


№ 10824 17
Gray

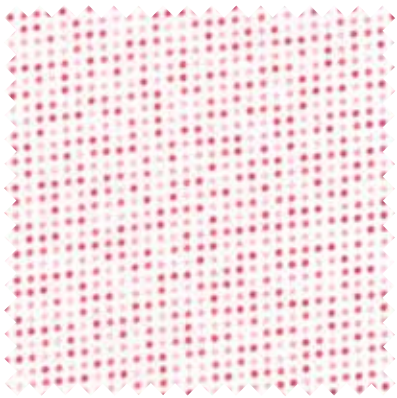


Running Yardage – stripes are 5½"

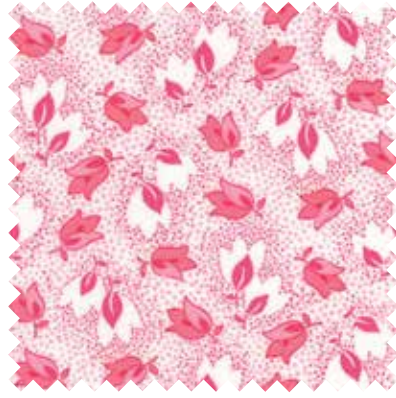
№ 10829 17*
Gray



1 VC 1218
VC 1218G
To the Point
Teal, Pink, Blue, Gray, or Green
Size: 40" x 40"



No 10827 22
Multi Pink



No 10821 12
Pink



No 10822 12*
Pink



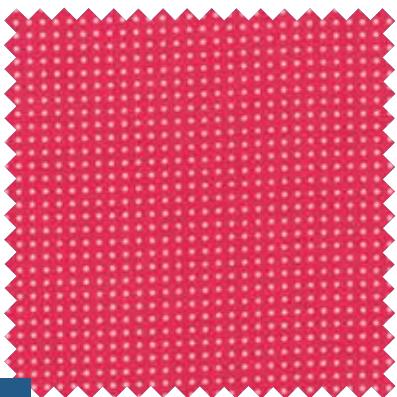
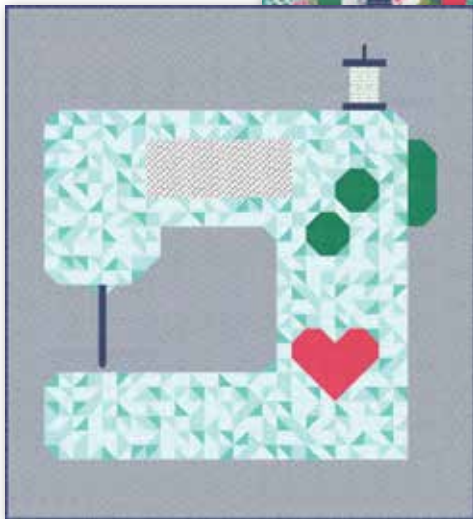
No 10824 12
Pink

1 VC 1217
VC 1217G
Handmade
Size: 64"x70"

2 VC 1219
VC 1219G
Lucky Stars
Size: 54"x72"



3 VC 1221 *Flower Box*
VC 1221G Size: 52"x68"



No 10827 12
Pink



No 10828 12*
Pink

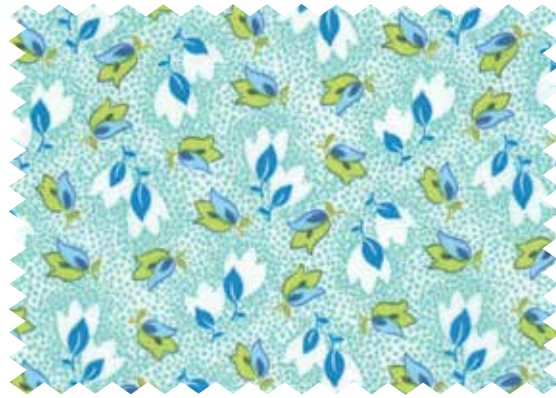


Running Yardage – stripes are 5½"

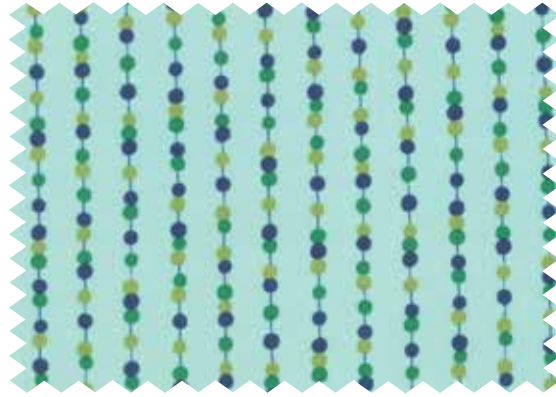
No 10829 12
Pink



№ 10820 13
Teal



№ 10821 13
Teal



№ 10825 13
Teal



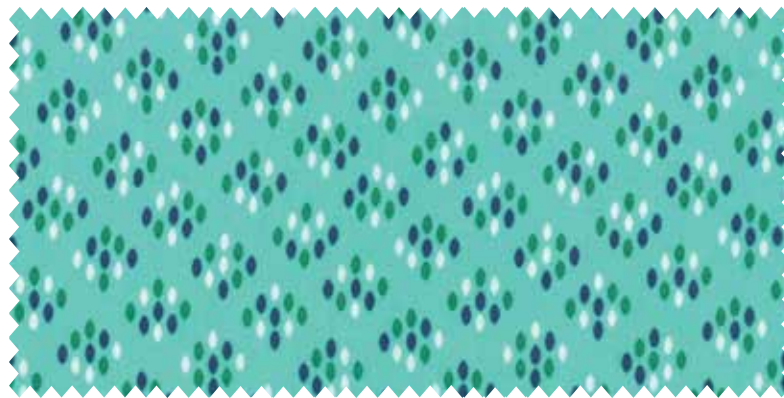
№ 10829 13*
Teal



№ 10822 13*
Teal Navy



№ 10822 21
Dark Teal



№ 10824 13*
Teal

Color Block Ombre Stripe — stripe measures 5½"

BELLA SOLIDS

9900-166 Amelia Pink

166

9900-48 Admiral Blue

48

9900-223 Shocking Pink

223

9900-268 Emerald

268

9900-183 Silver

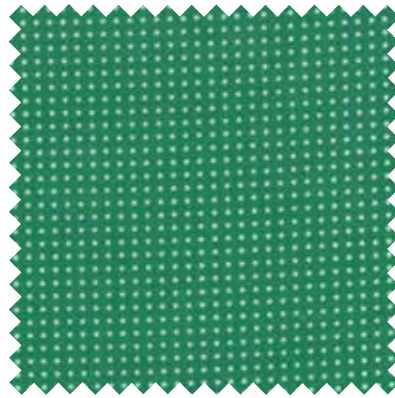
183

9900-269 Bermuda

269

9900-228 Fresh Grass

228



No 10827 14
Emerald



No 10828 13
Emerald



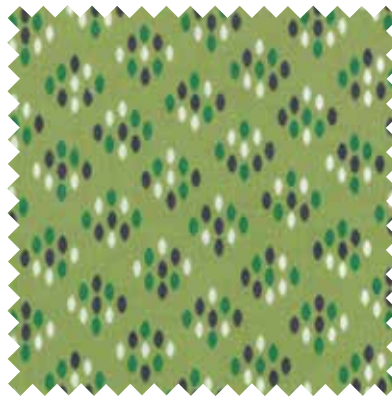
No 10824 14
Emerald



No 10825 14*
Emerald



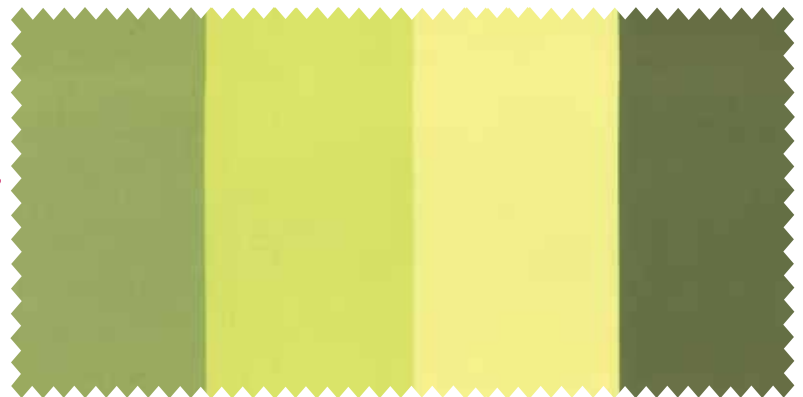
No 10822 15
Lime



No 10824 15*
Lime



No 10825 15
Lime



No 10829 15*
Lime

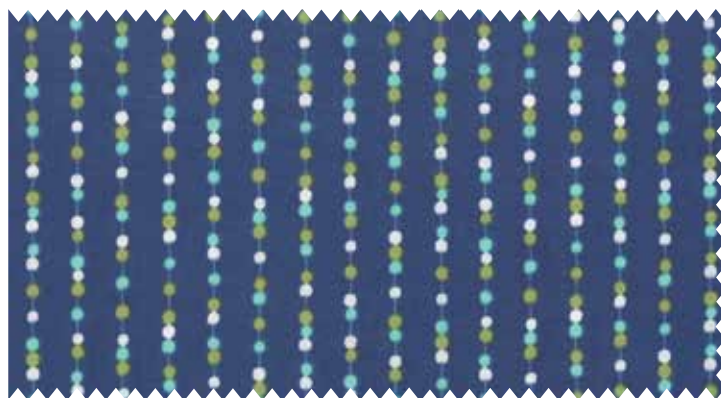
To learn more, visit:
www.vanessachristenson.com



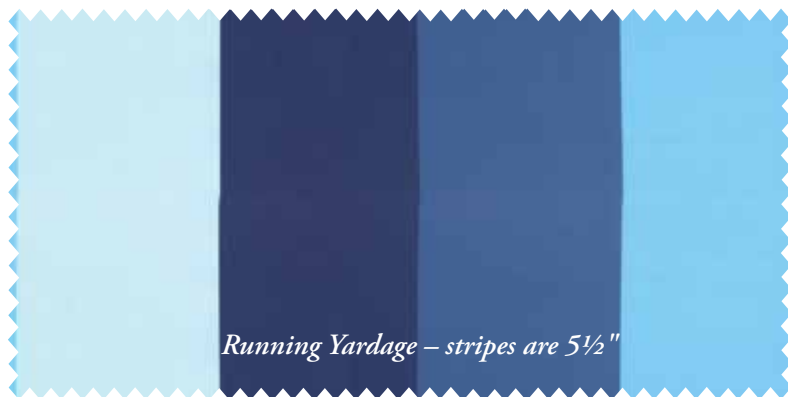
№ 10826 16*
Navy



№ 10827 16
Navy



№ 10825 16
Navy



Running Yardage – stripes are 5½"

№ 10829 16
Navy



№ 10820 15* or № 10820 15C
Lime

45" coated

■ CH50VC12
12 spools
50 WT
1422 Yds. Each



■ CH50VC10
10 spools
50 WT
220 Yds. Each



№ 10828 11* or № 10828 11C
Navy Emerald

Matching Threads from Aurifil

10820

Asst. 15

Asst. 10

Low Cal 20

AB

HC

JR

LC

MC

PP

SL



• 100% Premium Cotton • 40 Prints • 2 Coated • 7 Bella Solids *Delivery: March, 2014*

AB Bundles include 40 skus including 18" x 44" of pattern 10829. HC's, JR's, LC's, MC's, PP's and SL's do not include pattern 10829. HC's, JR's, LC's, MC's, PP's and SL's include two each of 10827-11, 12, 14, 16 & 21. Assortments & Precuts do not include Bella Solids.