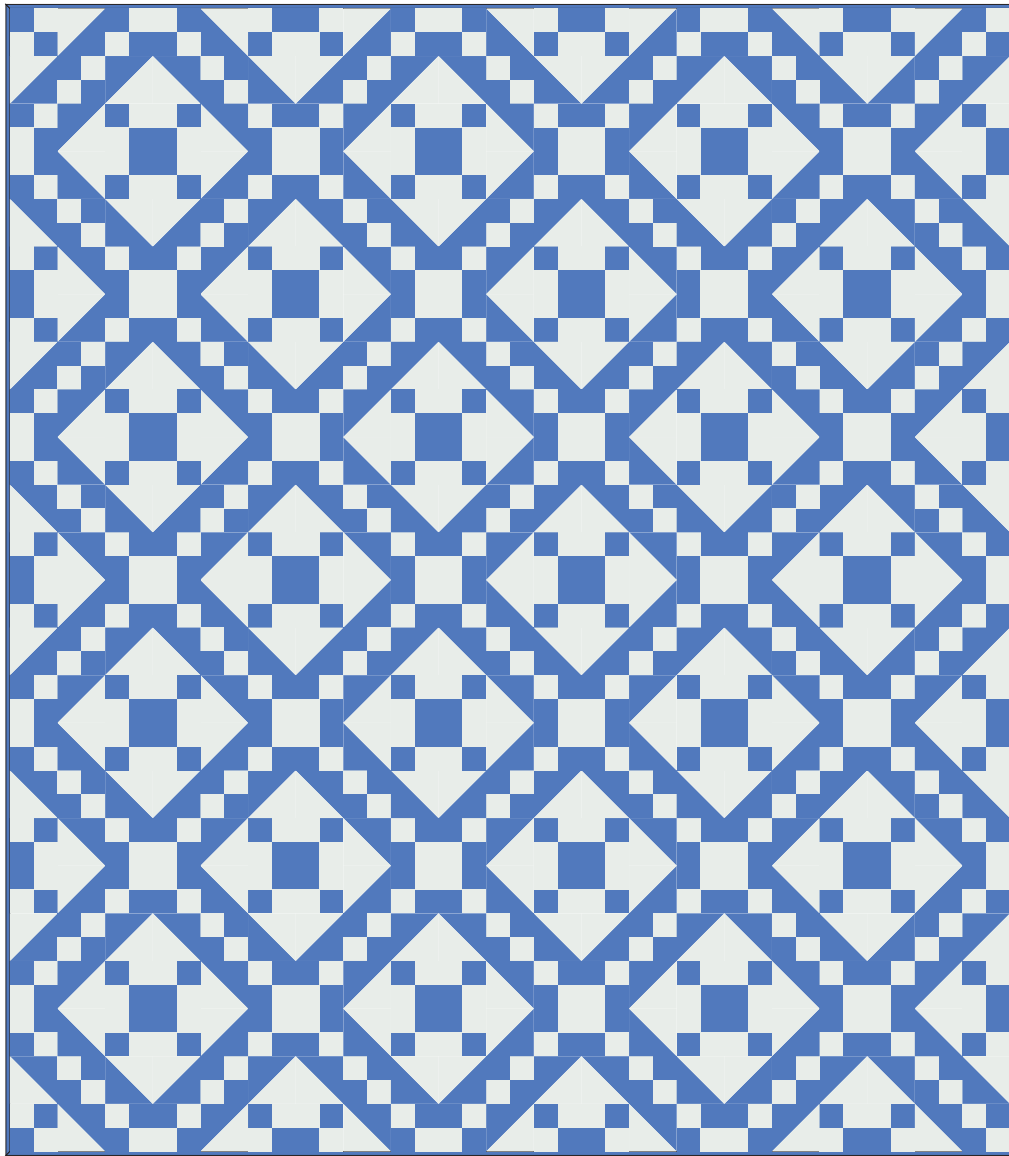


BLUEBERRY MUFFIN

FINISHED SIZE 63½" x 72½"



Featuring Bella Solids by Moda

moda
BAKERY 

© 2025 moda fabrics • all rights reserved



Cake Mix Video Tutorial

FABRIC REQUIREMENTS

4⅛ YARDS - BELLA SOLIDS, BLUE BLOCKS



9900 64

4⅛ YARDS - BELLA SOLIDS, OFF WHITE BLOCKS



9900 200

⅝ YARD - BINDING

4⅛ YARDS - BACKING

SUPPLIES

(2) CAKE MIX RECIPE 10 FOUNDATION RECIPE CARDS



CM10

73" × 82" PIECE OF BATTING

CUTTING

WOF = Width of Fabric (approx. 42")

FROM THE BLUE BELLA SOLID:

Cut (14) 10" × WOF strips. From strips, cut:
- (56) 10" × 10" squares

FROM THE OFF WHITE BELLA SOLID:

Cut (14) 10" × WOF strips. From strips, cut:
- (56) 10" × 10" squares

FROM THE BINDING FABRIC:

Cut (8) 2½" × WOF strips



MAKING THE BLOCK UNITS

Fabrics are sewn with right sides together. Refer to [this video](#) where Lissa Alexander shows you how to use the Cake Mix Recipe papers. HST = Half-square Triangle

1. Layer one *Off White* 10" square onto a *Blue* 10" square. Lining up the edges of the fabric squares, pin a *Cake Mix Recipe 10* recipe card on top.

2. Beginning at the star, stitch the layers together on the dashed lines in the direction of the arrows.

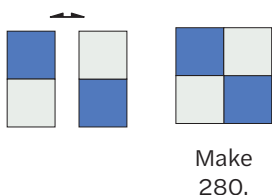
3. Cut apart using the solid lines. Gently tear away the paper, press seams toward darker fabric, and trim away the points to make four 3½" × 3½" HST units and (10) 2" × 3½" rectangles.

4. Repeat to stitch a total of 56 recipe cards to make (224) 3½" × 3½" HST units and (560) 2" × 3½" rectangles.

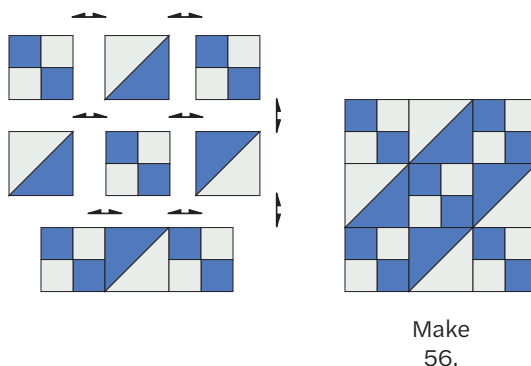
MAKING THE BLOCKS

Use a scant ¼" seam allowance. Refer to arrows for pressing.

5. Lay out two 2" × 3½" rectangles, as shown. Sew together to make a Four Patch unit measuring 3½" × 3½". Make 280.



6. Lay out five Four Patch units and (4) 3½" × 3½" HST units, as shown. Sew together into rows. Sew the rows together to make the Blueberry Muffin block. Block measures 9½" × 9½". Make 56.



ASSEMBLY AND FINISHING

Refer to the quilt assembly diagram on page 4.

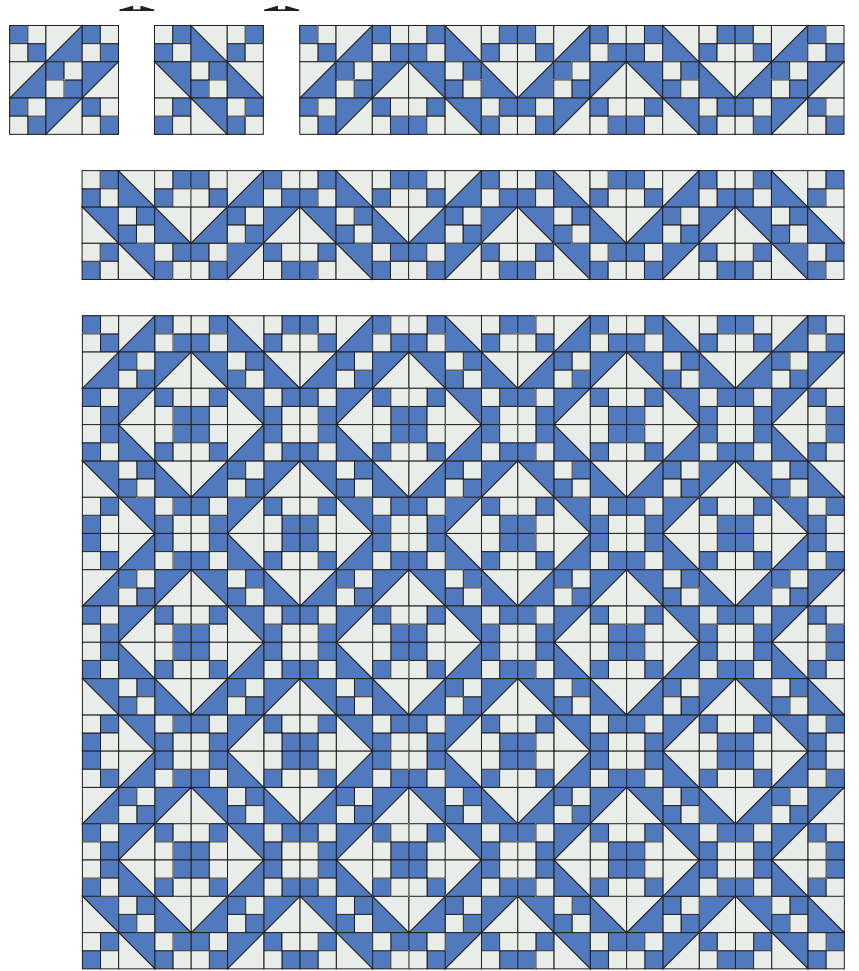
7. Lay out the 56 blocks into eight rows of seven blocks each. Join the blocks together into rows. Join the rows together to make the quilt top measuring 63½" × 72½".

8. Prepare backing. Layer, baste, and quilt as desired.

9. Trim the batting and backing even with the quilt top.

10. Sew the eight binding strips together using diagonal seams. Bind the edges of the quilt to finish. Enjoy!





Quilt assembly