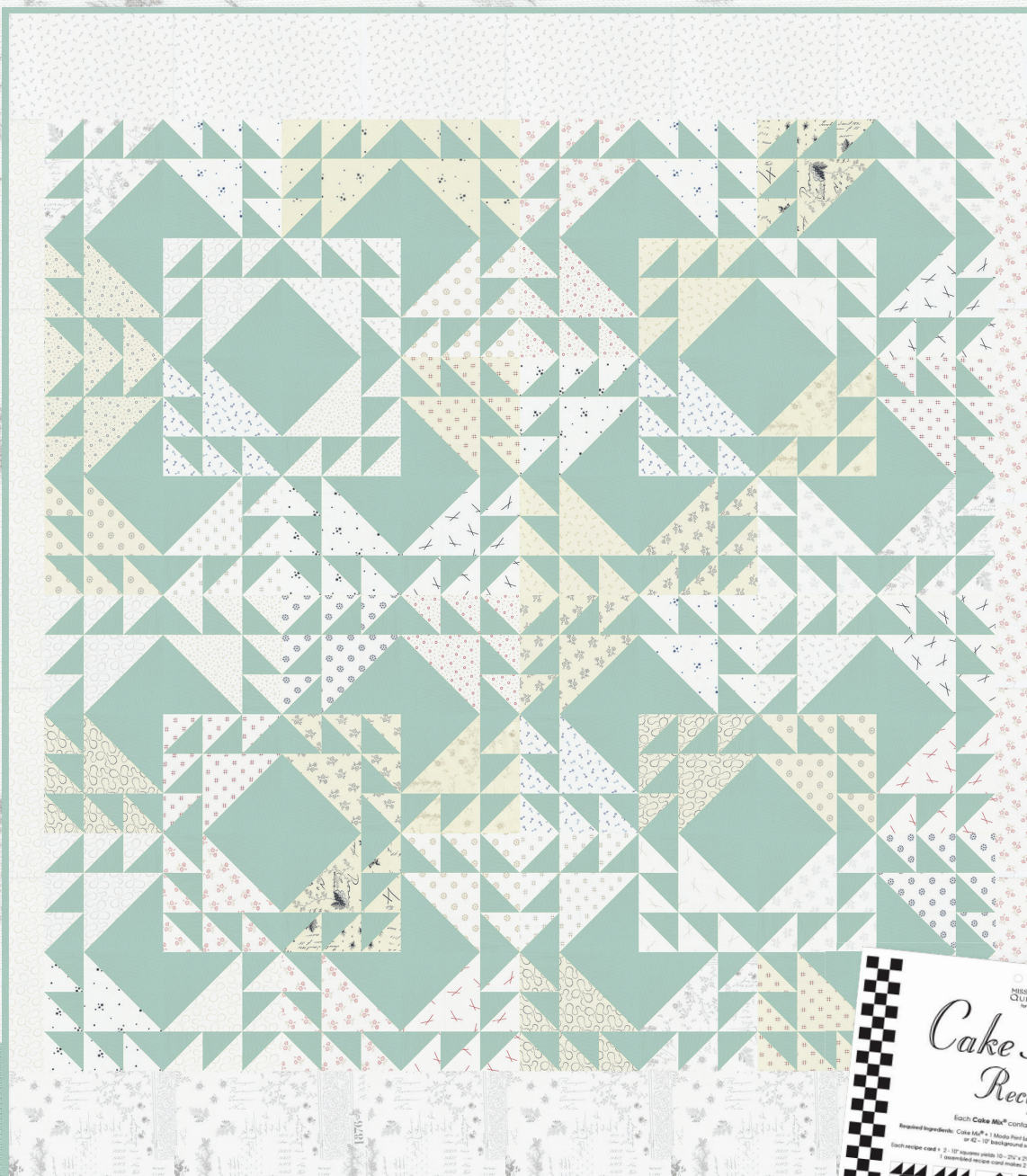


moda



© 2023 moda fabrics • all rights reserved



Mix it Up

FLEA MARKET LINENS  
WEB PATTERN  
Finished Size 58"x66"



moda FABRICS + SUPPLIES

modafabrics.com



## Using Cake Mix Papers

Moda Cake Mixes are triangle papers designed to make the parts needed to make the blocks shown on the front cover of each Recipe pad. Just add Layer Cakes or Charm Packs, stitch on the lines, cut apart and piece blocks.

### This is what you need to know to bake a Cake Mix Recipe.

- The Front Cover of each Recipe pad includes the size of the finished pieces, how many pieces each recipe card will make, and block options.
- Fabric preparation - use the fabric squares right out of the package. Do not starch fabrics as some recipe cards have only  $\frac{1}{8}$ " clearance on the four sides.

### Preparing to stitch.

- Layer two squares right sides together aligning the edges closely with the **lighter square on the top**.
- Line up the edge of the paper with the outside point of the pinked edges and pin to secure.
- Shorten the stitch length to 12 to 14 stitches or a machine setting of 1.75 to 2.

### Stitching the recipe card.

- Starting at the star and stitching in the direction of the arrows - **stitch on the dotted line**.
- After all the dotted lines have been stitched, use a rotary cutter and ruler to cut the square apart.
- With the paper still attached, press the seam to the dark triangle. Remove the paper and trim the corners.

For more information:

<https://blog.modafabrics.com/2018/08/cake-mix-101/>

[https://my.modafabrics.com/webfiles/fp\\_cake-mix-essentials\\_info-sheet.pdf](https://my.modafabrics.com/webfiles/fp_cake-mix-essentials_info-sheet.pdf)

## CUTTING & PREP

### CONTRASTING SOLID FABRIC

1. To create your own 'Layer Cake' of solid fabric, cut (8) 10" x Width of Fabric (WOF) strips. From each strip, subcut (4) 10" x 10" squares.

*\*If you are using Bella Solids Junior Layer Cakes for your solid fabric, you can skip Step 1 and enjoy not having to do so much cutting!*

You need (32) 10" x 10" solid squares total.

### PRINTS

1. Choose (32) 10"x10" squares from your Mix It Up Layer Cake, and save the rest for another project or to use in a scrappy backing.

2. From each of your (2) SIDE scrappy border F8's, cut (3)  $2\frac{1}{2}$ " x 22" strips.

3. From each of your (2) TOP/BOTTOM scrappy border fabrics, cut (2)  $6\frac{1}{2}$ " x WOF strips.

### BINDING

Cut (7)  $2\frac{1}{2}$ " x WOF strips.

*moda*

### PIECING

Use a scant  $\frac{1}{4}$ " seam throughout, apart from on the Cake Mix papers where you should stitch on the lines as directed.

Press seams open unless otherwise noted.

### CAKE MIX PAPERS

Gather your (32) 10"x10" squares of Prints, and (32) 10"x10" squares of Contrasting Solid.

With Right Sides Together (RST), layer each print square with a solid square on bottom.

Center (1) Cake Mix Recipe 2 sheet on top of the background square. Secure with pins.

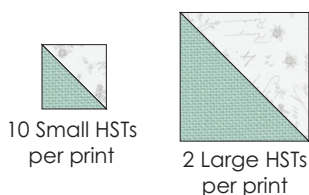
Stitch on the dotted lines.

Cut the square apart on the solid lines.

Each pair of squares will yield (10)  $2\frac{1}{4}$ " finished Half Square Triangles (HST) and (2)  $4\frac{1}{2}$ " finished HSTs (finished meaning once they are sewn into the completed project on all sides).

At this stage, the small HSTs will measure  $2\frac{3}{4}$ " x  $2\frac{3}{4}$ ", and the large HSTs will measure 5" x 5".

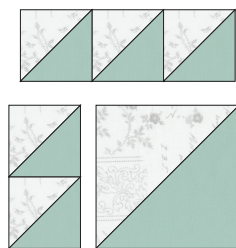
Press the seams on the HSTs toward the solid fabric.



Remove the Cake Mix paper. Trim the dog-ears on the HSTs.

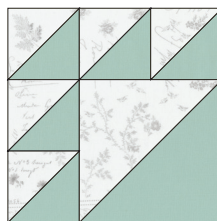
### MAKING THE PIECED UNITS

Each Cake Mix paper makes 2 units worth of HSTs. Separate out your pieces into (64) sets, each with matching (5) small HSTs and (1) large HST.



Lay out pieced units as shown.

The unit will measure  $7\frac{1}{4}$ " at this stage. Make (64) total.



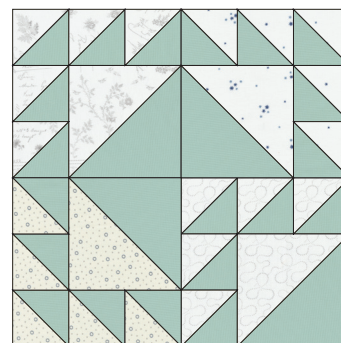
Unfinished Unit Size  
 $7\frac{1}{4}$ "x $7\frac{1}{4}$ "  
Make (64) Blocks

### MAKING THE BLOCKS

Separate your pieced units out into (16) sets of 4, to make 16 blocks.

Arrange the pieced units as shown, so that 3 of the units have the large solid HST pointing in toward the center, and 1 is turned opposite so the large solid HST points out.

Join top and bottom units, pressing seams open, and then join top to the bottom to make the block. Press seams open. Repeat to make 16 blocks, which will measure 14" x 14" at this stage.



Unfinished Block Size  
14"x14"  
Make (16) Blocks

### PIECING (cont'd)

#### PREP THE BORDERS

Gather the strips cut for the side and top/bottom borders.

To make one of the SIDE BORDERS, join (3) 2½"x22" strips end to end, pressing seams open. Then trim down to 2½"x54½". Repeat for the other side border.

To make one of the TOP/BOTTOM BORDERS, join (2) 6½"xWOF strips and press seam open. Then trim down to 6½"x58½". Repeat for other top/bottom border.

Join the three strips end to end, pressing seams open. Then trim down to 54½" long. Repeat for the other side border.

### FINISHING

Following the quilt diagram on the following page, lay out your blocks in (4) rows of (4) blocks each, alternating the direction of the pieced units so that the unit facing outward makes a secondary block shape when the blocks are all joined together.

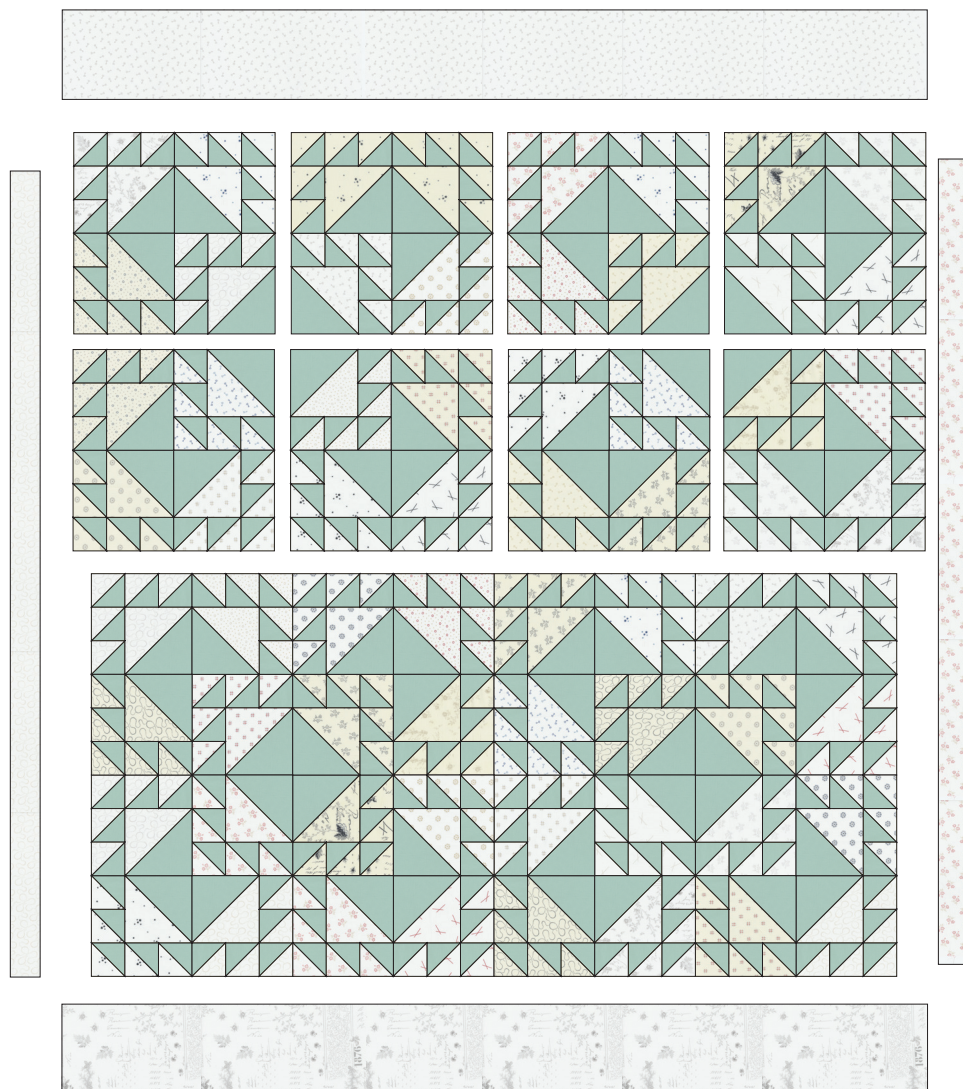
Join the blocks into (4) rows. Press seams open. Join the rows to complete the center of the quilt top.

Attach SIDE BORDERS (2½"x54½") to either side of quilt top center. Press seams toward borders.

Attach TOP/BOTTOM BORDERS (6½"x58½") to top and bottom of quilt top center. Press seams toward borders.

Finished quilt top measures 58" x 66".

Baste, quilt, bind and enjoy!

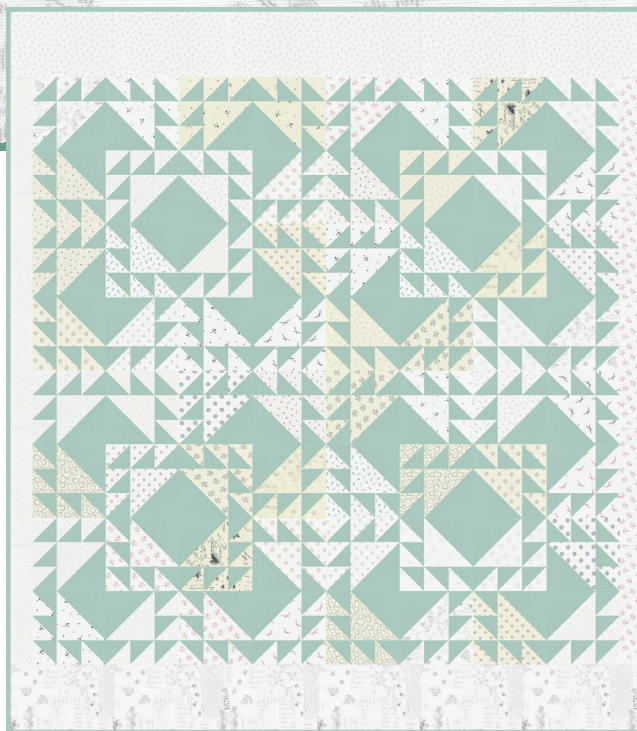




# Mix it Up

## FLEA MARKET LINENS WEB PATTERN

Finished Size 58"x66"



© 2023 moda fabrics • all rights reserved

### SUPPLY REQUIREMENTS



(1) LAYER CAKE OF  
MIX IT UP  
(33700LC)

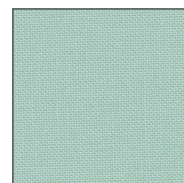


2<sup>5</sup>/<sub>8</sub> YDS. CONTRASTING SOLID\*  
(BELLA SOLID IN HOME TOWN  
SKY 9900 177)

\*or use 2 JUNIOR LAYER CAKES OF BELLA  
SOLID IN HOME TOWN SKY (9900JLC 177)



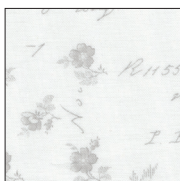
(1) Cake Mix 2 pad  
(CM2)



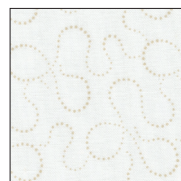
5/8 YARD BINDING  
(9900 177)



1/2 YARD  
TOP/BOTTOM BORDER  
(33701 11)



1/2 YARD  
TOP/BOTTOM BORDER  
(33700 11)



(1) F8  
SIDE BORDER  
(33702 21)



(1) F8  
SIDE BORDER  
(33707 21)



moda FABRICS + SUPPLIES

modafabrics.com