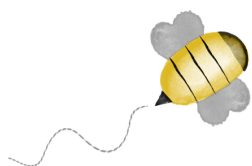


BEE-UTIFUL QUILT-A-LONG

by Pamela Morgan
of Sweet Little Stitches
for Moda Bake Shop



BLOCK 13 - BEE ROMANTIC

All steps use 3 strands of floss unless otherwise specified.

Stitches are denoted in *italics*. Colors of thread are in ALL CAPS.

INGREDIENTS

- 10 1/2" Square Background Fabric
- Various shades of six-strand embroidery floss
- 4" or 5" Embroidery Hoop
- Hand Embroidery Needles
- Frixion or other erasable thin-lined fabric pen

Step 1: Trace block design on to background fabric using desired method.

Step 2: *Backstitch* the frame of the bicycle and the road using BLACK floss.

Step 3: Outline the seat and the basket using a *backstitch* done in DARK GRAY floss.

Step 4: With LIGHT GRAY floss, *backstitch* the spokes, the tire rim, the spring, pedal, and handles. Then using the same thread, *satin stitch* the small circle at the joint where the bicycle meets the wheels.

Step 5: *Backstitch* the outline of the tire with LIGHT GRAY floss (I choose this color to simulate a white wall tire).

Step 6: I used a variety of colors and stitches for the flowers, keeping them similar to the colors in my bridal bouquet. Feel free to get creative with your bicycle bouquet!

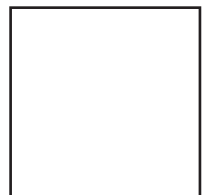
Step 7: Use a *satin stitch* and GOLDEN YELLOW floss for the bees' bodies.

Step 8: With BLACK floss, *satin stitch* the bees' heads, stripes, and stingers.

Step 9: *Backstitch* the bees' wings with LIGHT GRAY floss.

Step 10: Use a *running stitch* done with VERY LIGHT GRAY floss for the bees' flight paths.

Step 11: Remove block from hoop and press with hot iron under pressing cloth or fluffy towel. Trim to 8 1/2" square. If desired, machine topstitch a scant 1/8" around all sides to keep from unraveling while working on other blocks.



1 INCH
Do not print to
scale.