



This quilt finishes at 73 inches square.

## INGREDIENTS

1 – Layer Cake – 31150LC – Sweet Christmas by Urban Chiks  
 3 yards of Moda Bella 9900-200 for background, sashing, and 1<sup>st</sup> boarder  
 1 yard 31152-15 for the 2<sup>nd</sup> boarder  
 1 yard 31157-21 for the 3<sup>rd</sup> boarder  
 4 1/2 yards backing fabric {I used 2931153-21 from Sweet Christmas by Urban Chiks}  
 1 yards binding fabric {I used 31155-22 from the Sweet Christmas by Urban Chiks}

## GARNISHES

Your favorite neutral piecing thread  
 A rotatory cutter, mat and ruler  
 Your favorite 2 1/2 HST rulers  
 Your favorite 4 1/2 HST rulers

## INSTRUCTIONS

Tree Block (make 2)

For EACH tree block:

From Background fabric cut:

- (2) - 2 1/2 x 16 1/2 inch rectangles (A)
- (6) - 4 1/2 inch squares (B & C)
- (2) - 2 1/2 inch squares for CC (D)
- (4) - 5 inch square for HST (E)
- (2) - 4 1/4 x 10 1/2 inch rectangles (F)

**Block Assembly**

Draw a diagonal line on each of background and print 2 1/2 inch squares.

**Covered corners for top of the tree:**

With right sides together, take (1) 4 1/2 inch square of a green print and place a 2 1/2 inch square of background fabric in the upper right hand corner so that the drawn line goes from top to right side as shown.



Sew along the drawn line on the back ground fabric. Trim 1/4 inch above the seam and press open. Place the second 2 1/2 inch back ground fabric square on the left corner of the top of the tree as shown. Sew along the drawn line on the back ground fabric. Trim 1/4 inch above the seam and press open.

**Background fabric Covered Corner for each side of the top of the tree:**

With right sides together place 2 1/2 inch print fabric square over the bottom of the 4 1/2 inch background fabric.



9/3/2019

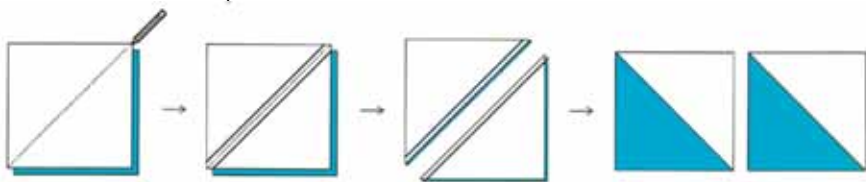
Original Recipe can be found at [www.modabakeshop.com](http://www.modabakeshop.com)

Recipes are sometimes altered to correct errors. Please ensure that you have downloaded the most recent Printer Friendly Version before starting your project. If you find a mistake in this pattern, please contact [modabakeshop@unitednotions.com](mailto:modabakeshop@unitednotions.com).

Sew along the drawn line on the back ground fabric. Trim  $\frac{1}{4}$  inch above the seam and press open. Repeat so that you have 2 Background fabric Covered Corner units.

### Half Square Triangle (HST) – You will need (5) – 4 $\frac{1}{2}$ HST's

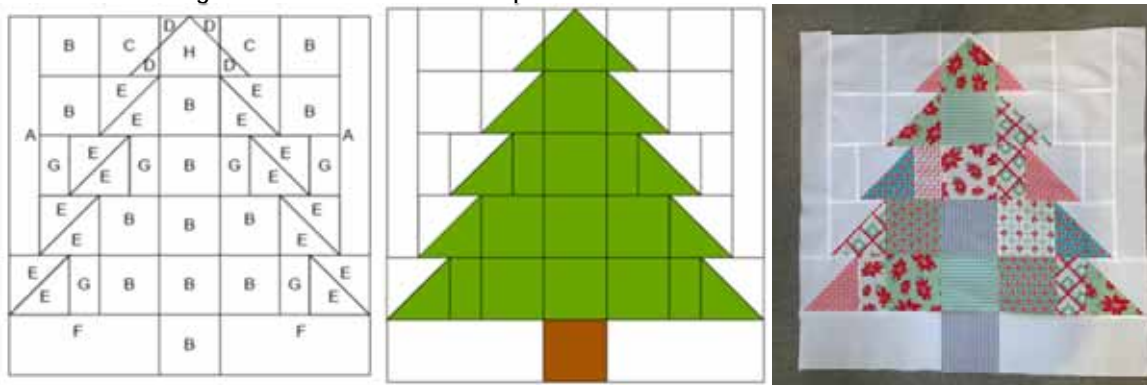
Draw a diagonal line on the (4) 5 inch background fabric squares.  
Place a 5 inch square of background fabric on top of a 5 inch square of printed fabric.  
Sew  $\frac{1}{4}$  on each side of the drawn line.  
Cut the square in half on the diagonal drawn line.  
Press the two HSTs open.



Trim to 4  $\frac{1}{2}$  inches.

Repeat with the other 3 sets of 5 inch background squares and printed fabrics so that you have 8 HSTs.

Finish assembling the block as shown in the photo below:



Repeat the sets for the second tree.

Trim you blocks to 24  $\frac{1}{2}$  inches.

### Making a Wreath Block (make 2)

To assemble each Wreath block cut:

#### Background fabric cut:

(6) - 2  $\frac{1}{2}$  x 4  $\frac{1}{2}$  inch rectangles (A)

(3) - 3 inch squares for HST(B)

(6) - 4  $\frac{1}{2}$  inch squares (C)

(4) - 5 inch square for HST (D)

(1) - 5  $\frac{1}{4}$  inch square SQST (E)

(2) - 2  $\frac{1}{2}$  inch squares (G)

#### Various Green & Teal, Prints for the Wreath

(7) - 2  $\frac{1}{2}$  x 4  $\frac{1}{2}$  inch rectangles (A)

(3) - 3 inch squares for HST(B)

#### Block Assembly

Make (6) HST using the 5 inch squares of background fabric and Various Green and Teal prints in the method explained in the Tree Block instructions. Trim to 4  $\frac{1}{2}$  inches.

Make (6) HST using the 3 inch squares of background fabric and Various Green and Teal prints in the method explained in the Tree Block instructions. Trim to 2  $\frac{1}{2}$  inches.

Make (4) HST using the 5 inch squares of background fabric and Various Red prints in the method explained in the Tree Block instructions. Trim to 4  $\frac{1}{2}$  inches.

### Split Quarter Square Triangle (SQST)

First make 2 HST {Follow the direction above in the Tree instructions} using (1) 3  $\frac{1}{4}$  inch square of Green or Teal print and (1) 3  $\frac{1}{4}$  inch square of red print. (Save the extra 3 inch Green & Red HST for the second Wreath)

Take the 3 inch square of Red print and draw a diagonal line on the wrong side of the fabric.

Place the 3 inch square of Red print on top of the Green & Red HST right sides together so that your drawn line dissects the the line in the HST.

Sew  $\frac{1}{4}$  inch on each side of the drawn line.

Cut the square in half on the diagonal drawn line.

Press the two SQSTs open.

(9) - 4  $\frac{1}{2}$  inch squares (C)

(4) - 5 inch square for HST (D)

(1) - 3  $\frac{1}{4}$  inch square SQST (F)

#### Various Red Prints for the Wreath's Big Bow

(1) - 2  $\frac{1}{2}$  x 4  $\frac{1}{2}$  inch rectangles (A)

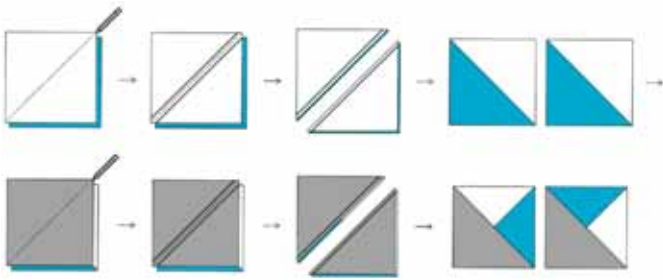
(1) - 3 inch squares for SQST (B)

(3) - 5 inch square for (4) HST and (1) SQST (D)

(1) - 5  $\frac{1}{4}$  inch square SQST for bottom of bow(E)

(1) - 3  $\frac{1}{4}$  inch square SQST (F)

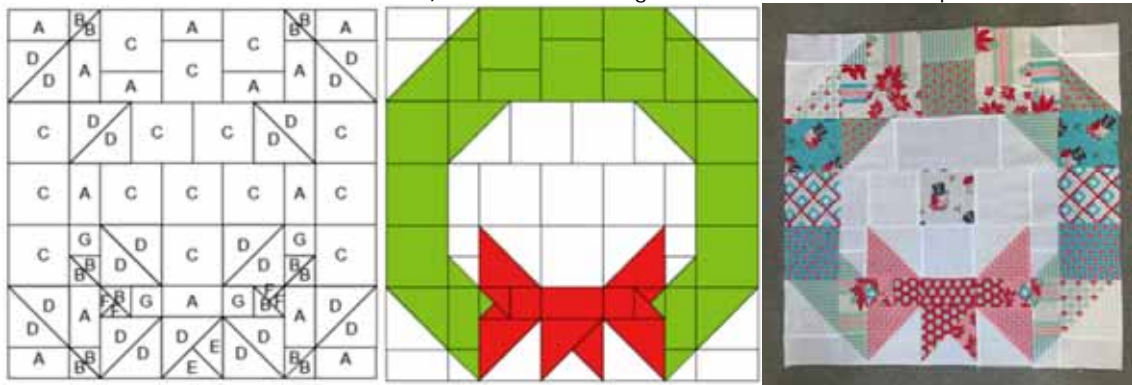
(2) - 2  $\frac{1}{2}$  inch squares (G)



Trim to 2 ½ inches.

SQST For the bottom of the Wreath's Bow {Follow the directions above}

First make 2 HST using (1) 5 ¼ inch square of background fabric and (1) 5 ¼ inch square of red print. (put aside the extra HST)  
 Take the 5 inch square of Red print and draw a diagonal line on the wrong side of the fabric. Place the 5 inch square of Red print on top of the Background & Red HST right sides together so that your drawn line dissects the the line in the HST. Sew ¼ inch on each side of the drawn line. Cut the square in half on the diagonal drawn line. Press the two SQSTs open. Trim to 4 ½ inches. (Save the extra SQST for the second wreath block) Finish assembling the block as shown in the photo below:



Notice that I decided to place a cute little snowman in the center of my wreath. Isn't he just darling?!?!

#### Quilt Sashing: & Cornerstones:

Cut (12) – 3 1/2 x 24 ½ inch strips of background fabric

Cut (9) – 3 ½ inch squares of various prints

Assemble the sashing and blocks as show in the image below (I colored the background cream so that it shows up in the illustration):



**First Border:** Cut (4) 2 ½ inch WOF of the background and piece together (2) – 2 ½ x 57 ½ inch strips and sew on each side of the assembled top. Piece together (2) 2 ½ x 61 ½ inch strips and sew on the top and bottom of the assemble quilt top.

**Second Border:** Cut (8) 3 1/2 inch WOF strips pf the Snowman print 31152-15 . Sew together to form (2) 61 1/2 inch strips and (2) 67 1/2 inch strips. Sew the 61 1/2 inch strips along each side of the quilt and the 67 1/2 inch strips along the top and bottom of the quilt.

**Third Border:** Cut (8) 3 ½ inch WOF strips of the little bows print 31157-21. Sew together to form (2) 67 1/2 inch strips and (2) 73 1/2 inch strips. Sew the 67 ½ inch strips along each side of the quilt and the 73 1/2 inch strips along the top and bottom of the quilt. Quilt and bind as desired. Wash, dry and then snuggle with it. In our house a quilt is not officially a quilt until it's been slept with!

## YIELD

This quilt finishes at 73 inches square.

Until next time... Happy Sewing!

Lisa Jo Girodat

9/3/2019

Original Recipe can be found at [www.modabakeshop.com](http://www.modabakeshop.com)

Recipes are sometimes altered to correct errors. Please ensure that you have downloaded the most recent Printer Friendly Version before starting your project. If you find a mistake in this pattern, please contact [modabakeshop@unitednotions.com](mailto:modabakeshop@unitednotions.com).

This is an original pattern not intended for sale.